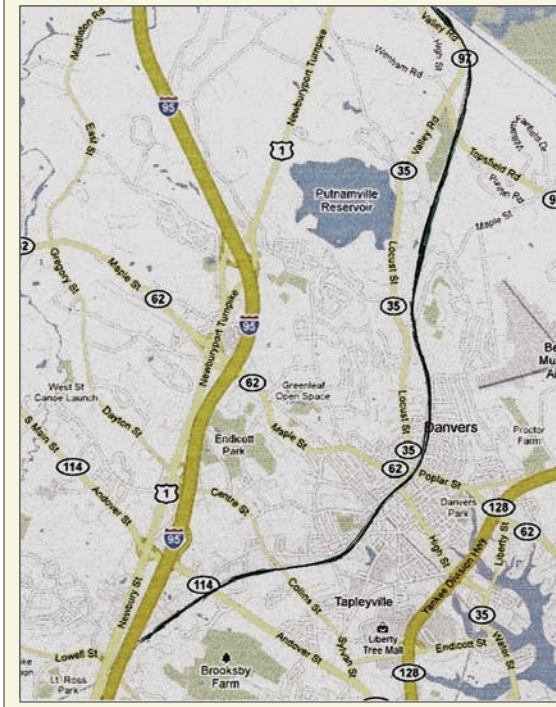




## WHO WILL BENEFIT FROM MULTI-USE TRAILS?

EVERYONE!

- ★ Unsafe, overgrown areas become frequently used “family friendly” areas
- ★ Community pathways give all ages a safe place to use non-motorized transportation
- ★ By increasing bicycle and pedestrian travel, road congestion, noise and air pollution decrease
- ★ Safe places to exercise will lead to improved health of Danvers’ citizens
- ★ Trails can have a favorable economic impact to downtown businesses
- ★ Homes can often sell faster and at higher prices along multi-use trails



Black line shows route of first proposed multi-use trail for Danvers.

## MULTI-USE TRAILS ARE THE FUTURE OF DANVERS

DANVERS BI-PEDS, INC.  
3 RIDING CLUB ROAD  
DANVERS, MA 01923

PHONE: 978-774-8159

WEBSITE:  
[www.danversbipeds.org](http://www.danversbipeds.org)

A CITIZENS GROUP HELPING TO  
MAKE TRAILS HAPPEN.  
NEW MEMBERS WELCOME

# THE FUTURE OF DANVERS MULTI-USE TRAILS



FACT BROCHURE

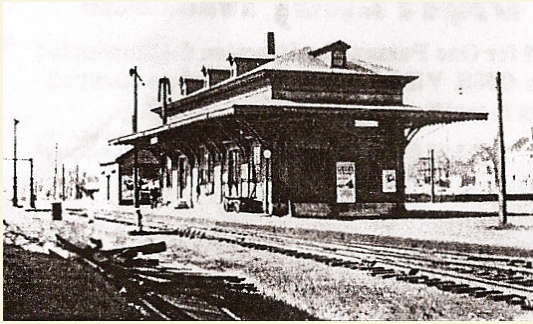
Presented by

Danvers Bi-Peds, Inc.

Citizens for  
safer biking and  
walking.



## Danvers Plains Station



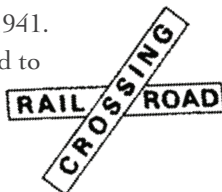
Archival photo

Of 9 train stations in Danvers during the peak years of rail service, only the Danvers Plains Station remains. Now looking sad and neglected, there are hopes to one day restore it.

### A Brief Danvers Railroad History

In earlier years, Danvers was a hub for crossing rail lines just as today it is a hub for highways. In the 1800's, the Eastern Railroad came from Salem to Danvers. In 1849, Essex Railroad line ran from Danvers to Lawrence. By 1926, all the service on these lines had ceased. The line from Salem to Danvers is not officially abandoned even though it has not been in service for decades. The Danvers Electric Co. now owns the Essex Railroad bed and uses it to carry electricity.

In 1852, the Massachusetts legislature gave permission to the Danvers Railroad Co. and the Danvers and Georgetown Railroad Co. to consolidate. The result was a Danvers to Newburyport Rail Line. Operations started in 1854. Service for Danvers to Newburyport ended in 1941. Passenger service continued to Topsfield until 1950. All service was officially abandoned in 1981.



## Frequently Asked Questions About Multi-use Trails

### ★ Does the town own the land for the proposed rail trails?

Most of it. The town signed a 99 year lease for \$1 with the MBTA in October of 2008 for the Newburyport Branch line which runs from the Peabody to the Wenham line. Other former rail lines have been owned by the town for many years and are used by the Danvers Electric Company.

### ★ How much will construction of the trails be and how will it be paid for?

Funding of rail trails can be accomplished in various ways from almost free to close to \$1 million per mile. For an example of a trail constructed with volunteers, fundraising, and grants, go to [www.wachusettgreenways.org](http://www.wachusettgreenways.org). Other communities who wish to work with Mass Highway to have them build the trail must provide 10 to 20% of the total costs, but these rules vary. Most of the funds used by Mass Highway for trails comes through Federal Highway funding. Visit [www.coastaltrails.org](http://www.coastaltrails.org) for 2 examples of trails funded in this way. For current information, contact Danvers Bi-Peds.

### ★ Who will pay for trail maintenance?

Maintenance costs are covered in various ways. Some communities absorbs the cost, some have volunteer efforts to cover all or part of the maintenance, and often funds are obtained through grant awards. In the town of East Hampton, MA, a Trail Friends group has set aside money for future needs. The Danvers Bi-Peds could function as a Friends of the Trail organization.

### ★ Will the community be liable for accidents on the rail trails?

The community will face the same liability as they currently have for accidents on the roads, sidewalks, recreation areas and conservation areas. These liability costs are usually minimal and are capped by statute.

### ★ Will motorized vehicles, especially dirt bikes, motorcycles and snowmobiles be allowed on the trails?

The only motorized vehicles allowed will be motorized wheelchairs, emergency and maintenance vehicles.

### ★ Where can I find more information?

Go to [danversbipeds.org](http://danversbipeds.org) or call 978-774-8159. You can also contact the Rail Trail Advisory Committee spokes person, Kate Day, Senior Planner at 978-777-0001, ext. 3029 or [kday@mail.danvers-ma.org](mailto:kday@mail.danvers-ma.org).



Life Along A Trail

